

Wind Ensemble/ Symphonic Band/ Symphony Orchestra Tuba Audition  
University of Tennessee College of Music  
January, 2026

**Everyone:**

Gallay *Unmetered Prelude* #26

Grigoriev *Etude* 16A

Grofe *Grand Canyon Suite*, mvt. 5 “Cloudburst”, rehearsal 14-rehearsal 15

**Optional, in order to be considered for Symphony Orchestra:**

Stravinsky *Petrushka*, *Peasant with Bear* solo, rehearsal 189-rehearsal 191

25 *mp*

26 *p*

## Veloce

16. *mf capriccioso*

## Veloce

16a *mf capriccioso*

11

12 5 13

14 1 *relax & articulate*

15 12 16 9 17

*molto marcato*

*ff*

*fz*

*rit. e fz cresc. fz*

18 Andante maestoso

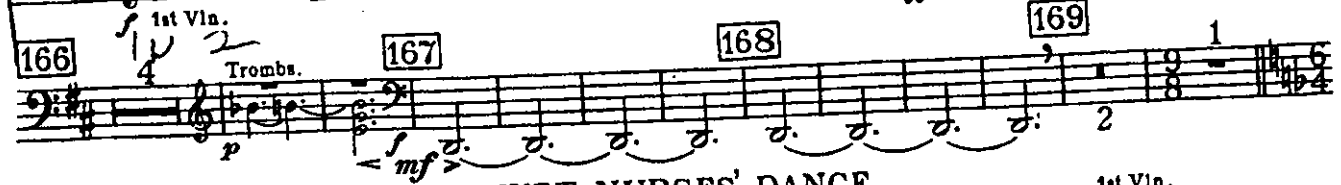
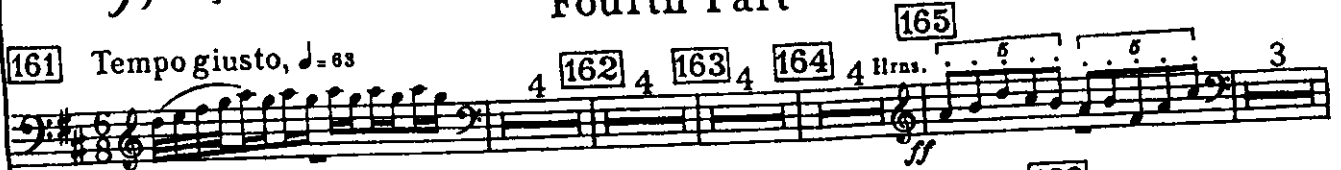
19 Più mosso

*molto marcato*

8

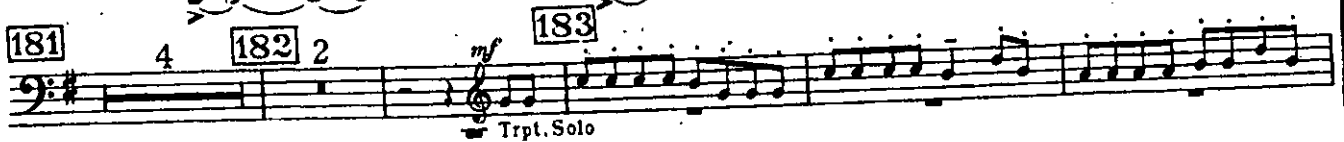
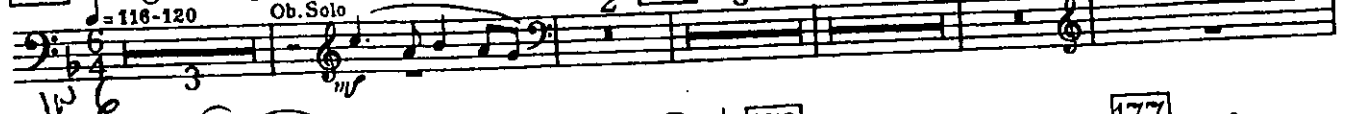
*ffz*

START

Tuba  
Fourth Part[161] Tempo giusto,  $\text{♩} = 63$ 

## WET-NURSES' DANCE

[170] Allegretto, [171]



## PEASANT WITH BEAR

[188] Poco accelerando

Tempo giusto,  $\text{♩} = 63$ 

[189] Splo.

