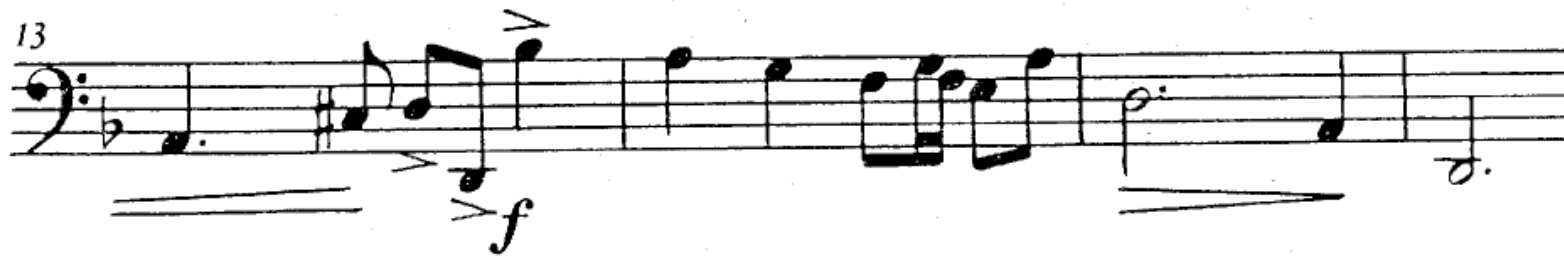


Allegro non troppo

4



ALLEGRETTO $\text{♩} = 76$

Handwritten musical notation for the first staff. It begins with a treble clef, a key signature of one flat (B-flat), and a 4/4 time signature. The tempo is marked 'ALLEGRETTO' and the metronome is set to 76. The first note is a quarter note G4, followed by a dotted quarter note A4. The rest of the staff contains a melodic line with eighth and quarter notes, including a B-flat. A dynamic marking 'mf' is placed below the first note. A slur covers the entire staff.

Handwritten musical notation for the second staff. It begins with a bass clef and a key signature of one flat. The staff contains a melodic line with eighth and quarter notes, including a B-flat. A slur covers the entire staff.

Handwritten musical notation for the third staff. It begins with a treble clef and a key signature of one flat. The staff contains a melodic line with eighth and quarter notes, including a B-flat. A slur covers the entire staff.

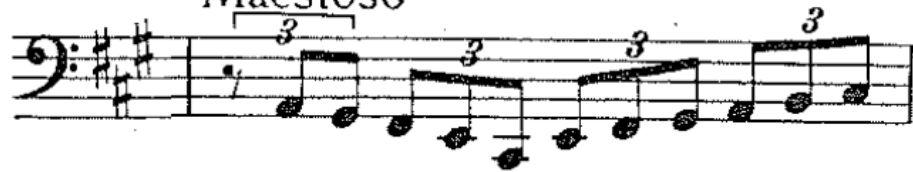
Allegro Moderato

SOLO \wedge

f *Cresc.*

80 *ff*

Maestoso



116



119

