

ANDANTE

Solo

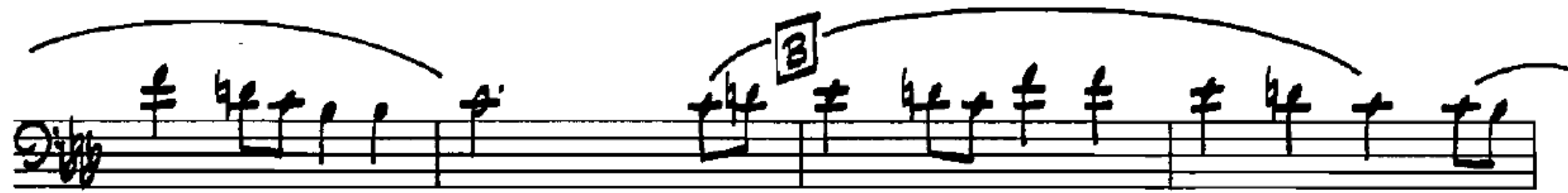


mf

A



B



Allegro moderato



Quarter-note = 120



mf sempre marcato

The first staff of music is in bass clef with a key signature of one flat (B-flat) and a 2/2 time signature. It contains 12 measures. The first measure has a half note G2 with an accent (^). The second measure has a half note A2 with an accent (^). The third measure has a half note B-flat2 with an accent (^). The fourth measure has a half note C3 with an accent (^). The fifth measure has a quarter note D3, quarter note E3, quarter note F3, and quarter note G3, all with accents (^). The sixth measure has a quarter note G3, quarter note F3, quarter note E3, and quarter note D3, all with accents (^). The seventh measure has a quarter note C3, quarter note B-flat2, quarter note A2, and quarter note G2, all with accents (^). The eighth measure has a quarter note G2, quarter note F2, quarter note E2, and quarter note D2, all with accents (^). The ninth measure has a quarter note C2, quarter note B-flat1, quarter note A1, and quarter note G1, all with accents (^). The tenth measure has a quarter note G1, quarter note F1, quarter note E1, and quarter note D1, all with accents (^). The eleventh measure has a quarter note C1, quarter note B-flat0, quarter note A0, and quarter note G0, all with accents (^). The twelfth measure has a quarter note G0, quarter note F0, quarter note E0, and quarter note D0, all with accents (^). There are also dynamic markings 'mf' and 'sempre marcato' below the first few measures.



The second staff of music is in bass clef with a key signature of one flat (B-flat) and a 2/2 time signature. It contains 12 measures. The first measure has a quarter note G2, quarter note A2, quarter note B-flat2, and quarter note C3, all with accents (^). The second measure has a quarter note C3, quarter note D3, quarter note E3, and quarter note F3, all with accents (^). The third measure has a quarter note F3, quarter note G3, quarter note A3, and quarter note B-flat3, all with accents (^). The fourth measure has a quarter note B-flat3, quarter note C4, quarter note D4, and quarter note E4, all with accents (^). The fifth measure has a quarter note E4, quarter note F4, quarter note G4, and quarter note A4, all with accents (^). The sixth measure has a quarter note A4, quarter note B-flat4, quarter note C5, and quarter note D5, all with accents (^). The seventh measure has a quarter note D5, quarter note C5, quarter note B-flat4, and quarter note A4, all with accents (^). The eighth measure has a quarter note A4, quarter note G4, quarter note F4, and quarter note E4, all with accents (^). The ninth measure has a quarter note D4, quarter note C4, quarter note B-flat3, and quarter note A3, all with accents (^). The tenth measure has a quarter note G3, quarter note F3, quarter note E3, and quarter note D3, all with accents (^). The eleventh measure has a quarter note C3, quarter note B-flat2, quarter note A2, and quarter note G2, all with accents (^). The twelfth measure has a quarter note G2, quarter note F2, quarter note E2, and quarter note D2, all with accents (^).



The third staff of music is in bass clef with a key signature of one flat (B-flat) and a 2/2 time signature. It contains 12 measures. The first measure has a quarter note G2, quarter note A2, quarter note B-flat2, and quarter note C3, all with accents (^). The second measure has a quarter note C3, quarter note D3, quarter note E3, and quarter note F3, all with accents (^). The third measure has a quarter note F3, quarter note G3, quarter note A3, and quarter note B-flat3, all with accents (^). The fourth measure has a quarter note B-flat3, quarter note C4, quarter note D4, and quarter note E4, all with accents (^). The fifth measure has a quarter note E4, quarter note F4, quarter note G4, and quarter note A4, all with accents (^). The sixth measure has a quarter note A4, quarter note B-flat4, quarter note C5, and quarter note D5, all with accents (^). The seventh measure has a quarter note D5, quarter note C5, quarter note B-flat4, and quarter note A4, all with accents (^). The eighth measure has a quarter note A4, quarter note G4, quarter note F4, and quarter note E4, all with accents (^). The ninth measure has a quarter note D4, quarter note C4, quarter note B-flat3, and quarter note A3, all with accents (^). The tenth measure has a quarter note G3, quarter note F3, quarter note E3, and quarter note D3, all with accents (^). The eleventh measure has a quarter note C3, quarter note B-flat2, quarter note A2, and quarter note G2, all with accents (^). The twelfth measure has a quarter note G2, quarter note F2, quarter note E2, and quarter note D2, all with accents (^).